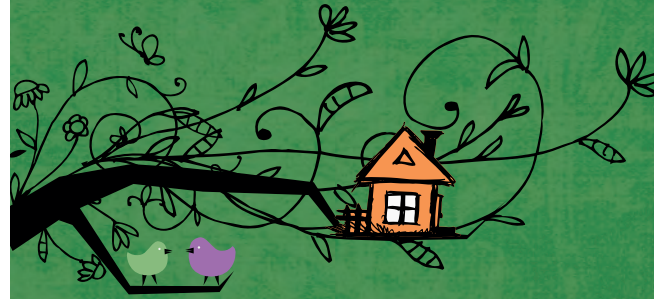


## Navigating the Benefit System

Our staff helps clients find benefits and programs they may be eligible for, including:

- **Food Stamp Benefits (SNAP)** are available to those who have sufficient income to meet most of their basic living costs but need help to supplement their food expenses.
- **Low-Income Home Energy Assistance Program (LIHEAP)** Qualifying households may receive cash benefits to assist with heating bills, crisis benefits to resolve heating emergencies, and weatherization/energy conservation assistance to provide long range solutions to the heating problems of low-income households.
- **Cash Assistance** is available to low-income people/families based on rules and standards established by the state Department of Public Welfare.
- **Medical Assistance (including Medical Assistance to Workers with Disabilities and the Medical Savings Program for Payment of Medicare premium)** identifies eligible individuals/families and helps them overcome the barriers to getting enrolled in free, comprehensive health care coverage.
- **Children's Health Insurance Program (CHIP)** is Pennsylvania's program to provide quality health insurance for children of working families who otherwise could not afford it. All children are eligible. Cost is income dependent.
- **Child Care Works Program** helps eligible families of low-income pay their childcare fees.



## Giving to Friend, Inc.

Join us in making northeastern Berks County a better place for all of us. As the economic climate of Berks County changes so do the needs of our families.

You can help by making a tax-deductible contribution:

Online: [www.friendinc.org](http://www.friendinc.org)

By mail: Friend, Inc. Community Services  
658D Noble Street  
Kutztown, PA 19530



## Lending a Helping Hand

610-683-7790 | [www.friendinc.org](http://www.friendinc.org)

## Our Mission Statement

Friend, Inc. Community Services is a multi-services social agency that supports the well-being of those in need and is committed to strengthening the lives of families and individuals living in Northeastern Berks County.

## Our Service Areas



## Visit Friend, Inc.

Directions from 222 North:

- Take Kutztown exit
- Merge on Main Street
- Make right at Noble Street, continue for approximately two miles
- Friend, Inc. will be on your right

## Making Connections to Community Resources

Since Friend, Inc. Community Services was founded in the 1970s, the agency has helped thousands of individuals in northeastern Berks County strengthen their relationships within their families and with their communities through human services connections.

- Food Pantry
- Information and Referral
- Career Link
- Money Management



### Food Pantry

The Food Pantry at Friend, Inc. Community Services provides food to over 700 local individuals annually.

The pantry serves the residents of the boroughs of Kutztown, Lyons, Fleetwood and Topton, and the townships of Albany, Greenwich, Maxatawny,

Maiden Creek, Richmond, Ruscombmanor, Rockland, District and Longswamp.

### Information and Referral

Friend, Inc. Community Services can help guide and coach households facing multiple challenges. We are committed to addressing the human services needs of residents in Northeastern Berks County.

## Information and Referral *continued...*

Friend, Inc. connects clients to community resources and services:

- Energy Assistance Programs
- Rent Assistance Programs
- AARA (American Recovery and Reinvestment Act)
- Homelessness Prevention
- Legal Services
- Recovery Groups
- Food Assistance
- Counseling

## Career Link

Friend, Inc. Community Services is an outreach point for PA Career Link of Berks County. We assist the underemployed and unemployed access the PA Career link in our offices. One of our trained staff members will assist clients with:

- Signing up for an account
- Creating, editing and posting a resume
- Searching the site for jobs
- Applying for jobs

## Money Management

Friend, Inc. Community Services works with many struggling individuals and families trying to make ends meet.

The agency matches interested clients to a volunteer who assists them with establishing a budget, organizing their financial information and providing suggestions on better budgeting, cutting expenses, and making or raising income.